



Main Features:

1. Compact structure can save the installation space.
2. Extend surface for long filter life.
3. Light weight easy to transportation and installation.
4. "V" shape pleats, have lower pressure.
5. Perfect filter channel ensure the uniform airflow.
6. Leak Test for all the filters.
7. UL Classified.

Introducing:

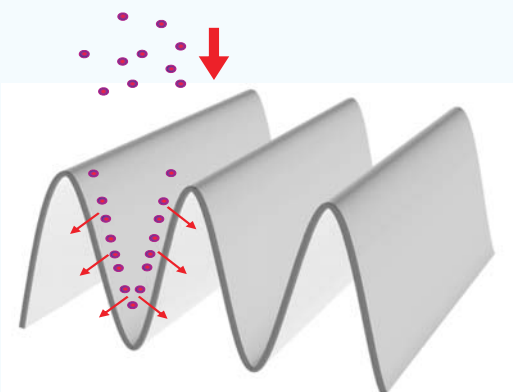
Mini-pleat HEPA & ULPA filters are available in efficiency ranges :

95%@MPPS to 99.99995%@MPPS

H11~U16 according to EN1822 testing standard. They are designed as a ultra-thin final filter; Depth of the filters are available , that can meet different installation environment and keep high efficiency also.

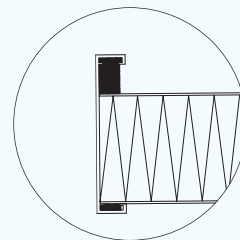
Construction:

Mini-pleat HEPA & ULPA filters use a diameter of 0.1~5um super fine Glass fibre for media, that ensure the filters has lower pressure drop, more dust holding and longer service life; Special processing made the media have the function of Water-resistance ; Such materials can be used in humid environments. The fine fiberglass media pleated to "V" shape to get lower pressure and better uniform airflow.



Also the materials pleated to media packs with the fine hot melt separator can withstand wind speeds of 2m without damage. Hot melt Non-continuous distribution methods, increased the usage rate of the filter media ,then give the media full play to the role of filtering.

Mini-pleat HEPA & ULPA filters usually use extruded anodized aluminum profile to protect the frame does not corrode; All kinds of frames can meet the needs of different situation:



Standard Frame

Standard frame Mini-pleat filter is used for FFU system and other clean equipments. Both ends of the frame is flat,so it is easy to install gasket. Also the flat frame can ensure the leakproofness of the installation.

Standard frame Mini-pleat filters usually use polyurethane continuous gasket to seal the filter and the installation frame.

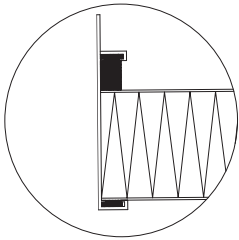


Continuous gasket



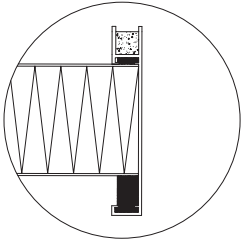
Dove tailed gasket

This gasket is made by injection molding machine, so it is Integrally and no seams. It have greater opportunity to avoid leakage.

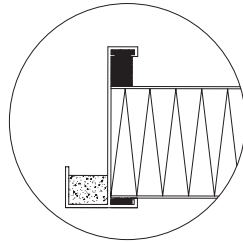


Knife-edge Frame

Knife-edge frame Mini-pleat filter is use for ceiling grid system with Gel-seal channel .This design to be benefit of save filter cost.The height of knife-edge usually is 20mm, that can meet the general needs of installation.Gel-seal applications help limit the possibility of leakage.



Top Gel-seal Frame



Side Gel-seal Frame

Gel-seal frame Mini-pleat filter is use for HEPA Box of pharmaceutical factory , food product and so on. According to installation conditions, the Gel-seal frame filters divided into Top and Side channel frame type . The width of frame channel usually is 18mm, and other dimension are available.These filters put jelly glue into the frame channel for gasket.Super-resilient of the

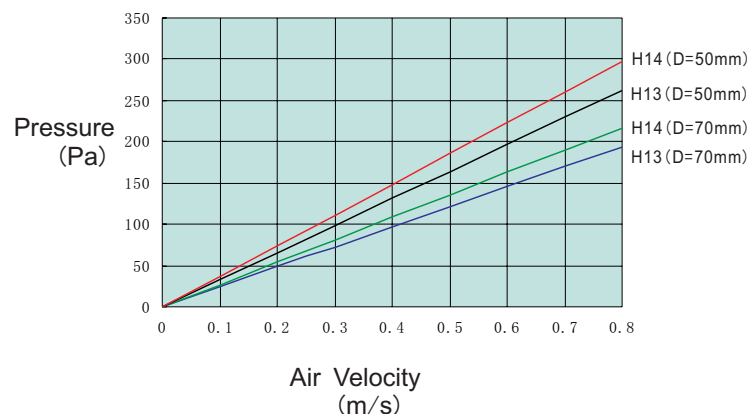
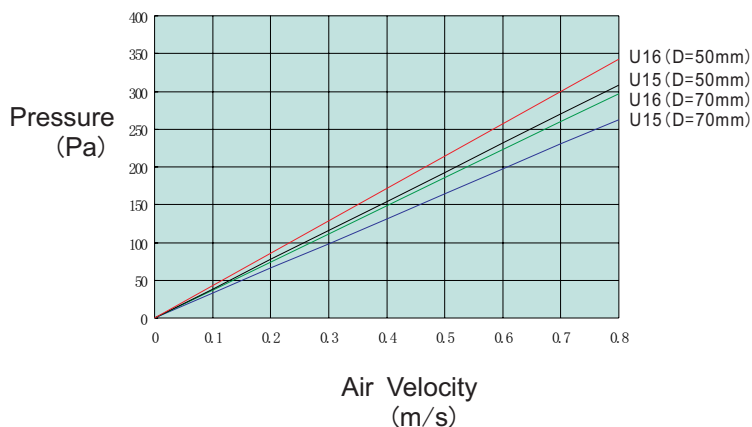
jelly glue make it can wrap the knife-edge completely, then prevent the air through installation joint.Also,the performance of rebound re-silience ensure the filter can repeated installation without damage. Mini-pleat HEPA&ULPA filters use the professional polyurethane adhesive for sealant to increase strength and avoid leakage. High quality of liquidity can ensure the pleats of the media enter into the adhesive completely, that the filter can avoid leakage.

Operating Conditions

- ※ Temperature: $\leq 70^{\circ}\text{C}$
- ※ Humidity: $\leq 100\%\text{RH}$

Option:

- 1.Galvanized sheet, Stainless steel , Aluminum sheet frame are available
- 2.Different styles profiles are available
- 3.Low boron media is available
- 4.Dove tailed CR, EPDM, EVA gasket are available.
- 5.Aluminum mesh, Painted Expanded Metal face guard on upstream or downstream are available.
- 6.EN1822 Test for all the filters are available.



Technical Parameters

Standard Frame Mini-pleat HEPA&ULPA

WxHxD (mm)	Area (m ²)	Efficiency	Airflow/ Initial Pressure CMH/Pa	Airflow/ Initial Pressure CMH/Pa	Airflow/ Initial Pressure CMH/Pa
610x610x50	8.11	H13	465/110	600/135	1130/275
		H14	465/125	600/160	1130/290
1210x610x50	16.57	H13	935/110	1205/135	2270/275
		H14	935/125	1205/160	2270/290
610x610x70	10.97	H13	465/85	600/110	1130/210
		H14	465/95	600/125	1130/235
1220x610x70	22.46	H13	935/85	1205/110	2270/210
		H14	935/95	1205/125	2270/235
610x610x50	8.11	U15	465/135	600/170	1130/320
		U16	465/150	600/190	1130/350
1220x610x50	16.57	U15	935/135	1205/170	2270/320
		U16	935/150	1205/190	2270/350
610x610x70	10.97	U15	465/115	600/145	1130/290
		U16	465/130	600/165	1130/310
1220x610x70	22.46	U15	935/115	1205/145	2270/290
		U16	935/130	1205/165	2270/310

Knife-edge Frame Mini-pleat HEPA&ULPA

WxHxD (mm)	Area (m ²)	Efficiency	Airflow/ Initial Pressure CMH/Pa	Airflow/ Initial Pressure CMH/Pa	Airflow/ Initial Pressure CMH/Pa
610x610x88	10.97	H13	465/85	600/110	1130/210
		H14	465/95	600/125	1130/235
1210x610x88	22.46	H13	935/85	1205/110	2270/210
		H14	935/95	1205/125	2270/235
610x610x110	12.34	H13	465/75	600/90	1130/175
		H14	465/85	600/110	1130/210
1220x610x110	24.34	H13	935/75	1205/90	2270/175
		H14	935/85	1205/110	2270/210
610x610x88	8.11	U15	465/115	600/145	1130/290
		U16	465/130	600/165	1130/310
1220x610x88	22.46	U15	935/115	1205/145	2270/290
		U16	935/130	1205/165	2270/310
610x610x110	12.34	U15	465/90	600/115	1130/220
		U16	465/110	600/135	1130/260
1220x610x110	24.34	U15	935/90	1205/115	2270/220
		U16	935/110	1205/135	2270/260

Knife-edge Frame Mini-pleat HEPA&ULPA

WxHxD (mm)	Area (m ²)	Efficiency	Airflow/ Initial Pressure CMH/Pa	Airflow/ Initial Pressure CMH/Pa	Airflow/ Initial Pressure CMH/Pa
610x610x75	10.52	H13	465/85	600/110	1130/210
		H14	465/95	600/125	1130/235
1210x610x75	21.54	H13	935/85	1205/110	2270/210
		H14	935/95	1205/125	2270/235
610x610x93	11.57	H13	465/75	600/90	1130/175
		H14	465/85	600/110	1130/210
1220x610x93	23.77	H13	935/75	1205/90	2270/175
		H14	935/85	1205/110	2270/210
610x610x75	10.52	U15	465/115	600/145	1130/290
		U16	465/130	600/165	1130/310
1220x610x75	21.54	U15	935/115	1205/145	2270/290
		U16	935/130	1205/165	2270/310
610x610x93	11.57	U15	465/90	600/115	1130/220
		U16	465/110	600/135	1130/260
1220x610x93	23.77	U15	935/90	1205/115	2270/220
		U16	935/110	1205/135	2270/260

※ Recommended final pressure: 600Pa

※ Pressure range 15%

※ Above parameters for your reference only, please consult our technical person regarding the detailed specific parameters difference.

※ Different size and specification are available.